



BioWellnessX

Sample 619-021424-036

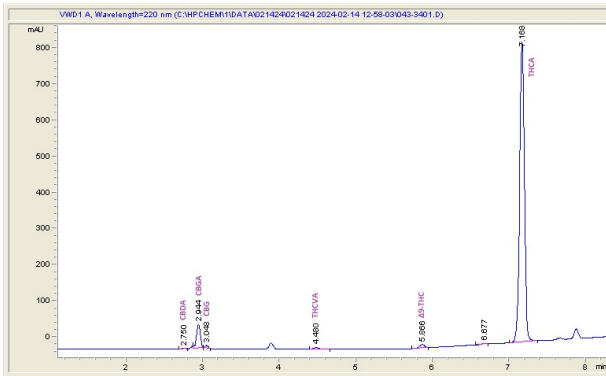
Papa Don

Sample Submitted: 02-14-2024; Report Date: 02-22-2024

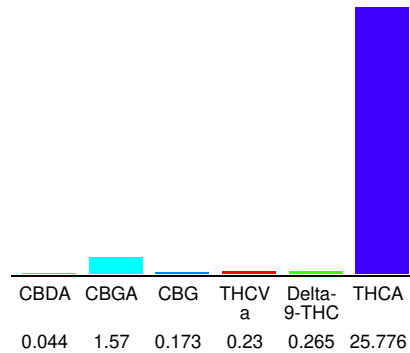
**Papa Don**

Plant Material: Infused Flower

**Chromatogram**



**Cannabinoid Profile**



**Cannabinoid Profile by HPLC**

**0.27%**  
Delta-9-THC

**0.00%**  
CBD

**28.06%**  
Total Cannabinoids

| Cannabinoid                 | % wt         | mg/g          |
|-----------------------------|--------------|---------------|
| CBDA                        | 0.044        | 0.44          |
| CBGA                        | 1.57         | 15.7          |
| CBG                         | 0.173        | 1.73          |
| THCVa                       | 0.23         | 2.3           |
| Delta-9-THC                 | 0.265        | 2.65          |
| THCA                        | 25.78        | 257.76        |
| <b>Total Cannabinoids</b>   | <b>28.06</b> | <b>280.6</b>  |
| <b>Calculated Total THC</b> | <b>22.87</b> | <b>228.71</b> |
| <b>Calculated CBD Yield</b> | <b>0.04</b>  | <b>0.39</b>   |

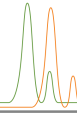
Calculated Total THC = Delta-9-THC + 0.877 \* THCA  
Calculated Maximum CBD Yield = CBD + 0.877 \* CBDA

**Marin Analytics, LLC**  
250 Bel Marin Keys Blvd, Suite D4  
Novato, CA 94949

833-321-TEST / info@marinanalytics.com

**Mike Clemmons**  
Lab Manager

This sample has been tested by Marin Analytics, LLC using valid testing methodologies and a quality system. Values reported relate only to the sample tested. Marin Analytics, LLC makes no claims as to the efficacy, safety, or other risks associated with any detected or non-detected levels of any compounds reported herein. This Certificate shall not be reproduced except in full without the written approval of Marin Analytics, LLC. Copyright 2023 Marin Analytics, LLC All Rights Reserved.



BioWellnessX

Sample 619-021424-034

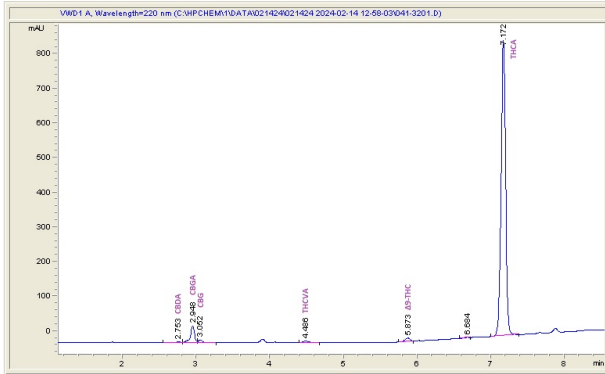
Wedding Crasher

Sample Submitted: 02-14-2024; Report Date: 02-22-2024

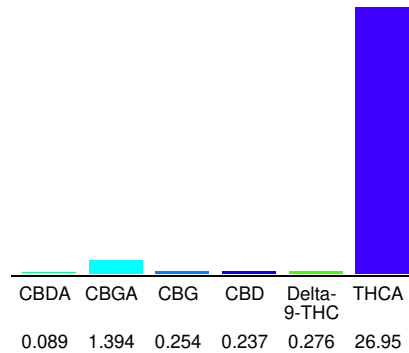
## Wedding Crasher

Plant Material: Hemp Flower

### Chromatogram



### Cannabinoid Profile



### Cannabinoid Profile by HPLC

**0.28%**  
Delta-9-THC

**0.24%**  
CBD

**29.20%**  
Total Cannabinoids

| Cannabinoid                 | % wt         | mg/g          |
|-----------------------------|--------------|---------------|
| CBDA                        | 0.089        | 0.89          |
| CBGA                        | 1.394        | 13.94         |
| CBG                         | 0.254        | 2.54          |
| CBD                         | 0.237        | 2.37          |
| Delta-9-THC                 | 0.276        | 2.76          |
| THCA                        | 26.95        | 269.5         |
| <b>Total Cannabinoids</b>   | <b>29.20</b> | <b>292.0</b>  |
| <b>Calculated Total THC</b> | <b>23.91</b> | <b>239.11</b> |
| <b>Calculated CBD Yield</b> | <b>0.32</b>  | <b>3.15</b>   |

Calculated Total THC = Delta-9-THC + 0.877 \* THCA  
Calculated Maximum CBD Yield = CBD + 0.877 \* CBDA

**Marin Analytics, LLC**  
250 Bel Marin Keys Blvd, Suite D4  
Novato, CA 94949

833-321-TEST / info@marinanalytics.com

**Mike Clemmons**  
Lab Manager

This sample has been tested by Marin Analytics, LLC using valid testing methodologies and a quality system. Values reported relate only to the sample tested. Marin Analytics, LLC makes no claims as to the efficacy, safety, or other risks associated with any detected or non-detected levels of any compounds reported herein. This Certificate shall not be reproduced except in full without the written approval of Marin Analytics, LLC. Copyright 2023 Marin Analytics, LLC All Rights Reserved.

BiowellnessX, Inc.

Sample 619-110223-018

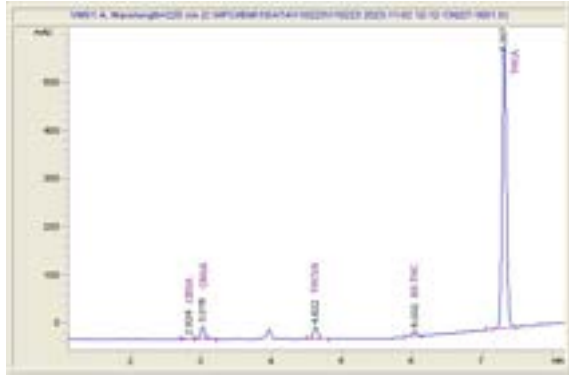
Cadillac Rainbow Hemp Flower

Sample Submitted: 11-02-2023; Report Date: 11-08-2023

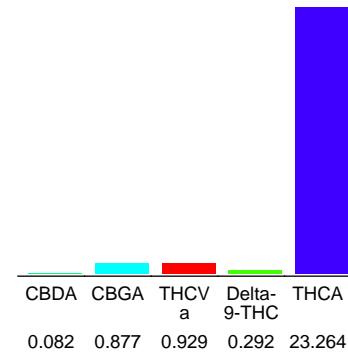
## Cadillac Rainbow Hemp Flower

Plant Material: Hemp Flower

### Chromatogram



### Cannabinoid Profile



### Cannabinoid Profile by HPLC

**0.29%**

Delta-9-THC

**0.00%**

CBD

**25.44%**

Total Cannabinoids

| Cannabinoid                 | % wt         | mg/g          |
|-----------------------------|--------------|---------------|
| CBDA                        | 0.082        | 0.82          |
| CBGA                        | 0.877        | 8.77          |
| THCVa                       | 0.929        | 9.29          |
| Delta-9-THC                 | 0.292        | 2.92          |
| THCA                        | 23.26        | 232.64        |
| <b>Total Cannabinoids</b>   | <b>25.44</b> | <b>254.4</b>  |
| <b>Calculated Total THC</b> | <b>20.69</b> | <b>206.95</b> |
| <b>Calculated CBD Yield</b> | <b>0.07</b>  | <b>0.72</b>   |


Calculated Total THC = Delta-9-THC + 0.877 \* THCA

Calculated Maximum CBD Yield = CBD + 0.877 \* CBDA

**Marin Analytics, LLC**

 250 Bel Marin Keys Blvd, Suite D4  
 Novato, CA 94949

833-321-TEST / info@marinanalytics.com


**Mike Clemmons**  
 Lab Manager

BiowellnessX, Inc.

Sample 619-112023-026

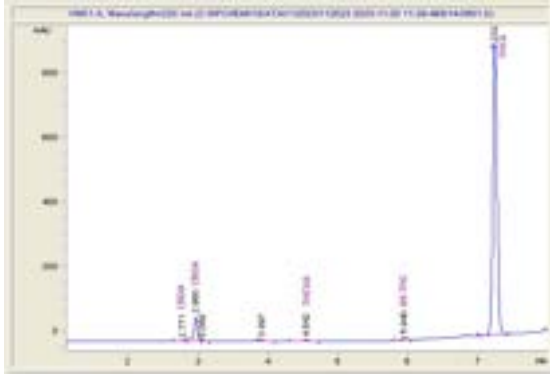
GMO Sherbet (Hemp Flower)

Sample Submitted: 11-20-2023; Report Date: 11-28-2023

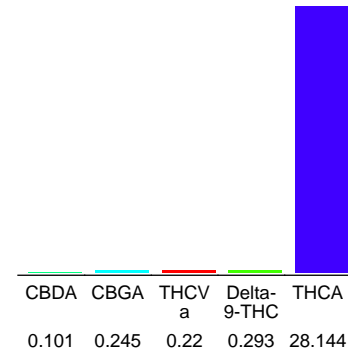
## GMO Sherbet (Hemp Flower)

Plant Material: Hemp Flower

### Chromatogram



### Cannabinoid Profile



### Cannabinoid Profile by HPLC

**0.29%**

Delta-9-THC

**0.00%**

CBD

**29.00%**

Total Cannabinoids

| Cannabinoid                 | % wt         | mg/g          |
|-----------------------------|--------------|---------------|
| CBDA                        | 0.101        | 1.01          |
| CBGA                        | 0.245        | 2.45          |
| THCVa                       | 0.22         | 2.2           |
| Delta-9-THC                 | 0.293        | 2.93          |
| THCA                        | 28.14        | 281.44        |
| <b>Total Cannabinoids</b>   | <b>29.00</b> | <b>290.0</b>  |
| <b>Calculated Total THC</b> | <b>24.98</b> | <b>249.75</b> |
| <b>Calculated CBD Yield</b> | <b>0.09</b>  | <b>0.89</b>   |

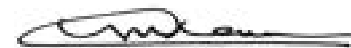
Calculated Total THC = Delta-9-THC + 0.877 \* THCA

Calculated Maximum CBD Yield = CBD + 0.877 \* CBDA

**Marin Analytics, LLC**

 250 Bel Marin Keys Blvd, Suite D4  
 Novato, CA 94949

833-321-TEST / info@marinanalytics.com


**Mike Clemmons**  
 Lab Manager

BiowellnessX, Inc.

Sample 619-112023-023

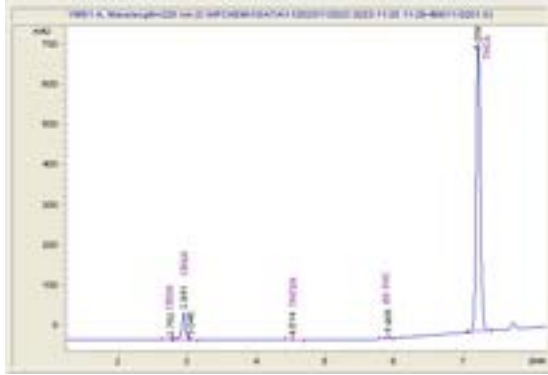
Ice Cream Cookies 2.0 (Hemp Flower)

Sample Submitted: 11-20-2023; Report Date: 11-28-2023

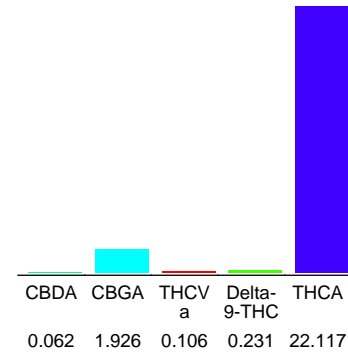
## Ice Cream Cookies 2.0 (Hemp Flower)

Plant Material: Hemp Flower

## Chromatogram



## Cannabinoid Profile



## Cannabinoid Profile by HPLC

**0.23%**

Delta-9-THC

**0.00%**

CBD

**24.44%**

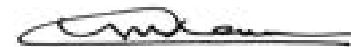
Total Cannabinoids

| Cannabinoid                 | % wt         | mg/g          |
|-----------------------------|--------------|---------------|
| CBDA                        | 0.062        | 0.62          |
| CBGA                        | 1.926        | 19.26         |
| THCVa                       | 0.106        | 1.06          |
| Delta-9-THC                 | 0.231        | 2.31          |
| THCA                        | 22.12        | 221.17        |
| <b>Total Cannabinoids</b>   | <b>24.44</b> | <b>244.4</b>  |
| <b>Calculated Total THC</b> | <b>19.63</b> | <b>196.28</b> |
| <b>Calculated CBD Yield</b> | <b>0.05</b>  | <b>0.54</b>   |

Calculated Total THC = Delta-9-THC + 0.877 \* THCA  
 Calculated Maximum CBD Yield = CBD + 0.877 \* CBDA

**Marin Analytics, LLC**  
 250 Bel Marin Keys Blvd, Suite D4  
 Novato, CA 94949

833-321-TEST / info@marinanalytics.com


**Mike Clemmons**  
 Lab Manager

BiowellnessX, Inc.

Sample 619-110223-017

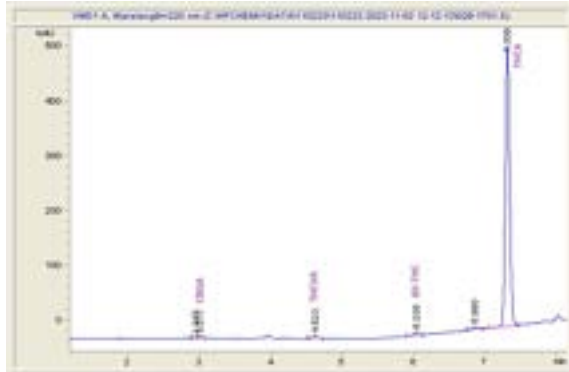
Purple Punch Hemp Flower

Sample Submitted: 11-02-2023; Report Date: 11-08-2023

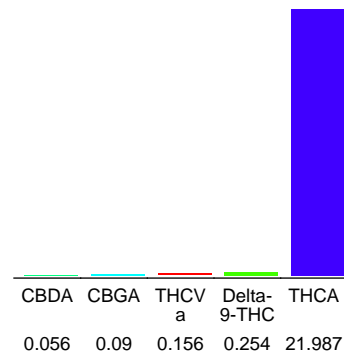
## Purple Punch Hemp Flower

Plant Material: Hemp Flower

### Chromatogram



### Cannabinoid Profile



### Cannabinoid Profile by HPLC

**0.25%**

Delta-9-THC

**0.00%**

CBD

**22.54%**

Total Cannabinoids

| Cannabinoid                 | % wt         | mg/g          |
|-----------------------------|--------------|---------------|
| CBDA                        | 0.056        | 0.56          |
| CBGA                        | 0.09         | 0.9           |
| THCVa                       | 0.156        | 1.56          |
| Delta-9-THC                 | 0.254        | 2.54          |
| THCA                        | 21.99        | 219.87        |
| <b>Total Cannabinoids</b>   | <b>22.54</b> | <b>225.4</b>  |
| <b>Calculated Total THC</b> | <b>19.54</b> | <b>195.37</b> |
| <b>Calculated CBD Yield</b> | <b>0.05</b>  | <b>0.49</b>   |

Calculated Total THC = Delta-9-THC + 0.877 \* THCA  
 Calculated Maximum CBD Yield = CBD + 0.877 \* CBDA

**Marin Analytics, LLC**

 250 Bel Marin Keys Blvd, Suite D4  
 Novato, CA 94949

833-321-TEST / info@marinanalytics.com


**Mike Clemmons**  
 Lab Manager



BioWellnessX

Sample 614-060523-024  
AAA Apple Fritter THCa Hemp Flower

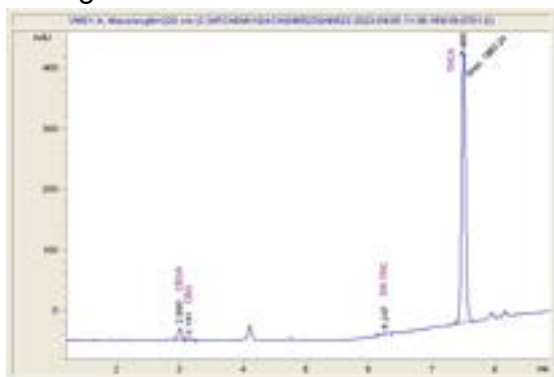
Sample Submitted: 06-05-2023; Report Date: 06-07-2023

AAA Apple Fritter THCa Hemp Flower

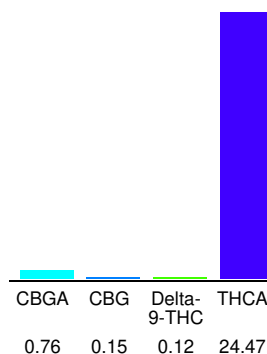
Batch/Lot # VF-Room 1-C 3-27

Plant Material: Flower

### Chromatogram



### Cannabinoid Profile



### Cannabinoid Profile by HPLC

**0.12%**  
Delta-9-THC

**0.00%**  
CBD

**25.50%**  
Total Cannabinoids

| Cannabinoid                 | % wt         | mg/g         |
|-----------------------------|--------------|--------------|
| CBGA                        | 0.76         | 7.6          |
| CBG                         | 0.15         | 1.5          |
| Delta-9-THC                 | 0.12         | 1.2          |
| THCA                        | 24.47        | 244.7        |
| <b>Total Cannabinoids</b>   | <b>25.50</b> | <b>255.0</b> |
| <b>Calculated CBD Yield</b> | <b>0.00</b>  | <b>0.00</b>  |

Calculated Maximum CBD Yield = CBD + 0.877 \* CBDA

**Marin Analytics, LLC**  
250 Bel Marin Keys Blvd, Suite D4  
Novato, CA 94949

415-936-6477 / sarabiancalana1@gmail.com

**Sara Biancalana**  
Chief Scientist

This sample has been tested by Marin Analytics, LLC using valid testing methodologies and a quality system. Values reported relate only to the sample tested. Marin Analytics, LLC makes no claims as to the efficacy, safety or other risks associated with any detected or non-detected levels of any compounds reported herein. This Certificate shall not be reproduced except in full, without the written approval of Marin Analytics, LLC. Copyright 2022 Marin Analytics, LLC All Rights Reserved.



BioWellnessX

Sample 499-121522-019

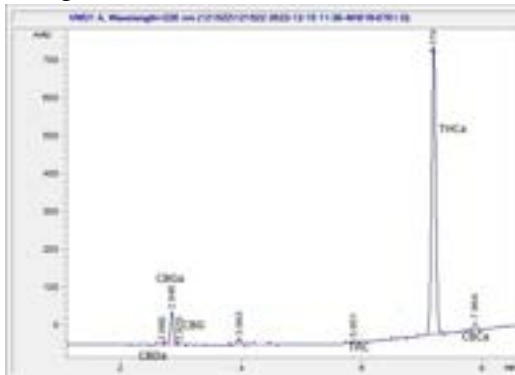
Aloha 5.0 THC-A Hemp Flower

Sample Submitted: 12-15-2022; Report Date: 12-15-2022

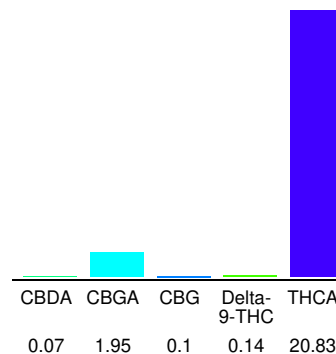
## Aloha 5.0 THC-A Hemp Flower

Plant Material: Flower

### Chromatogram



### Cannabinoid Profile



### Cannabinoid Profile by HPLC

0.14%

Delta-9-THC

0.00%

CBD

23.09%

Total Cannabinoids

| Cannabinoid                 | % wt         | mg/g         |
|-----------------------------|--------------|--------------|
| CBDA                        | 0.07         | 0.7          |
| CBGA                        | 1.95         | 19.5         |
| CBG                         | 0.1          | 1.0          |
| Delta-9-THC                 | 0.14         | 1.4          |
| THCA                        | 20.83        | 208.3        |
| <b>Total Cannabinoids</b>   | <b>23.09</b> | <b>230.9</b> |
| <b>Calculated CBD Yield</b> | <b>0.06</b>  | <b>0.61</b>  |

Calculated Maximum CBD Yield = CBD + 0.877 \* CBDA

### Marin Analytics, LLC

250 Bel Marin Keys Blvd, Suite D4  
Novato, CA 94949

415-936-6477 / sarabiancalana1@gmail.com

**Sara Biancalana**  
Chief Scientist

This sample has been tested by Marin Analytics, LLC using valid testing methodologies and a quality system. Values reported relate only to the sample tested. Marin Analytics, LLC makes no claims as to the efficacy, safety or other risks associated with any detected or non-detected levels of any compounds reported herein. This Certificate shall not be reproduced except in full, without the written approval of Marin Analytics, LLC. Copyright 2022 Marin Analytics, LLC All Rights Reserved.





BioWellnessX

Sample 467-031623-028

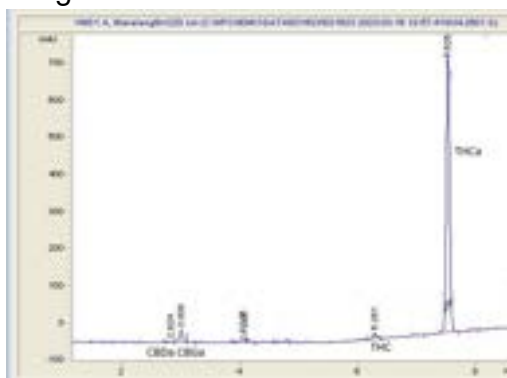
Lemon Cherry Gelato THCA Hemp

Sample Submitted: 03-16-2023; Report Date: 03-16-2023

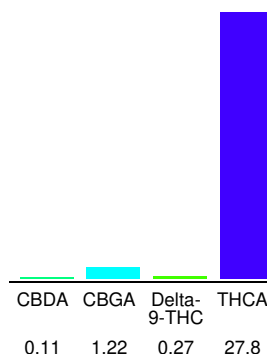
## Lemon Cherry Gelato THCA Hemp

Plant Material: Flower

### Chromatogram



### Cannabinoid Profile



### Cannabinoid Profile by HPLC

**0.27%**  
Delta-9-THC

**0.00%**  
CBD

**29.40%**  
Total Cannabinoids

| Cannabinoid                 | % wt         | mg/g         |
|-----------------------------|--------------|--------------|
| CBDA                        | 0.11         | 1.1          |
| CBGA                        | 1.22         | 12.2         |
| Delta-9-THC                 | 0.27         | 2.7          |
| THCA                        | 27.8         | 278.0        |
| <b>Total Cannabinoids</b>   | <b>29.40</b> | <b>294.0</b> |
| <b>Calculated CBD Yield</b> | <b>0.10</b>  | <b>0.96</b>  |

Calculated Maximum CBD Yield = CBD + 0.877 \* CBDA

**Marin Analytics, LLC**  
250 Bel Marin Keys Blvd, Suite D4  
Novato, CA 94949

415-936-6477 / sarabiancalana1@gmail.com

*Sara Biancalana*  
**Sara Biancalana**  
Chief Scientist

This sample has been tested by Marin Analytics, LLC using valid testing methodologies and a quality system. Values reported relate only to the sample tested. Marin Analytics, LLC makes no claims as to the efficacy, safety or other risks associated with any detected or non-detected levels of any compounds reported herein. This Certificate shall not be reproduced except in full, without the written approval of Marin Analytics, LLC. Copyright 2022 Marin Analytics, LLC All Rights Reserved.



BioWellnessX

Sample 467-031623-020

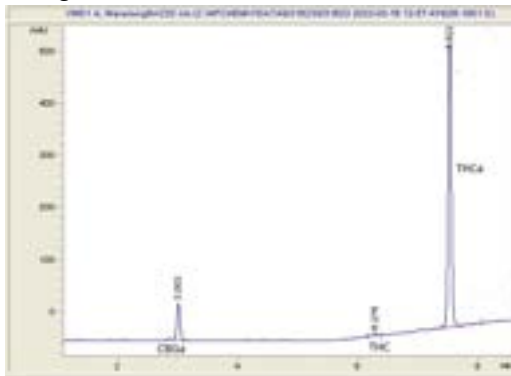
Baked Apple Tart THC-A Hemp

Sample Submitted: 03-16-2023; Report Date: 03-16-2023

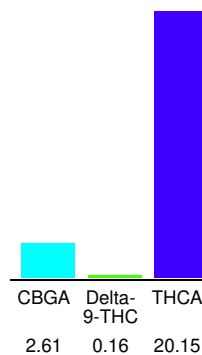
## Baked Apple Tart THC-A Hemp

Plant Material: Flower

### Chromatogram



### Cannabinoid Profile



### Cannabinoid Profile by HPLC

**0.16%**  
Delta-9-THC

**0.00%**  
CBD

**22.92%**  
Total Cannabinoids

| Cannabinoid                 | % wt         | mg/g         |
|-----------------------------|--------------|--------------|
| CBGA                        | 2.61         | 26.1         |
| Delta-9-THC                 | 0.16         | 1.6          |
| THCA                        | 20.15        | 201.5        |
| <b>Total Cannabinoids</b>   | <b>22.92</b> | <b>229.2</b> |
| <b>Calculated CBD Yield</b> | <b>0.00</b>  | <b>0.00</b>  |

Calculated Maximum CBD Yield = CBD + 0.877 \* CBDA

**Marin Analytics, LLC**

250 Bel Marin Keys Blvd, Suite D4  
Novato, CA 94949

415-936-6477 / sarabiancalana1@gmail.com

**Sara Biancalana**  
Chief Scientist

This sample has been tested by Marin Analytics, LLC using valid testing methodologies and a quality system. Values reported relate only to the sample tested. Marin Analytics, LLC makes no claims as to the efficacy, safety or other risks associated with any detected or non-detected levels of any compounds reported herein. This Certificate shall not be reproduced except in full, without the written approval of Marin Analytics, LLC. Copyright 2022 Marin Analytics, LLC All Rights Reserved.

BioWellnessX

Sample 614-062223-045

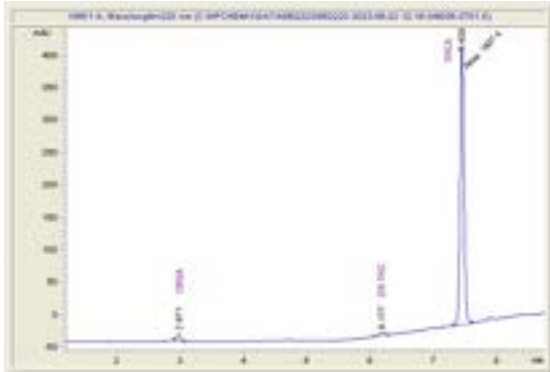
LA Kush Cake THC-A Hemp Flower

Sample Submitted: 06-22-2023; Report Date: 06-27-2023

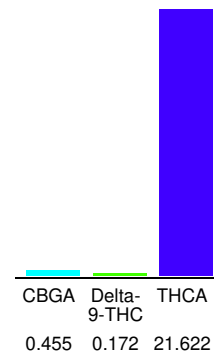
## LA Kush Cake THC-A Hemp Flower

Plant Material: Flower

### Chromatogram



### Cannabinoid Profile



### Cannabinoid Profile by HPLC

**0.17%**

Delta-9-THC

**0.00%**

CBD

**22.25%**

Total Cannabinoids

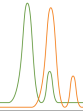
| Cannabinoid                                       | % wt         | mg/g          |
|---|--------------|---------------|
| CBGA  | 0.455        | 4.55          |
| Delta-9-THC                                       | 0.172        | 1.72          |
| THCA  | 21.62        | 216.22        |
| <b>Total Cannabinoids</b>                         | <b>22.25</b> | <b>222.5</b>  |
| <b>Calculated Total THC</b>                       | <b>19.13</b> | <b>191.34</b> |
| <b>Calculated CBD Yield</b>                       | <b>0.00</b>  | <b>0.00</b>   |
| Calculated Total THC = Delta-9-THC + 0.877 * THCA |              |               |
| Calculated Maximum CBD Yield = CBD + 0.877 * CBDA |              |               |

**Marin Analytics, LLC**

 250 Bel Marin Keys Blvd, Suite D4  
 Novato, CA 94949

833-321-TEST / info@marinanalytics.com


**Sara Biancalana**  
 Chief Scientist



BioWellnessX

Sample 619-021424-039

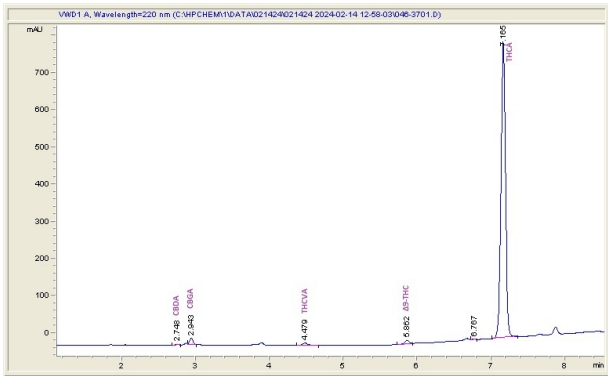
Platinum Punch

Sample Submitted: 02-14-2024; Report Date: 02-22-2024

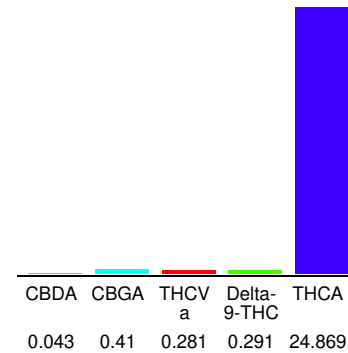
## Platinum Punch

Plant Material: Hemp Flower

### Chromatogram



### Cannabinoid Profile



### Cannabinoid Profile by HPLC

**0.29%**  
Delta-9-THC

**0.00%**  
CBD

**25.89%**  
Total Cannabinoids

| Cannabinoid                 | % wt         | mg/g          |
|-----------------------------|--------------|---------------|
| CBDA                        | 0.043        | 0.43          |
| CBGA                        | 0.41         | 4.1           |
| THCVa                       | 0.281        | 2.81          |
| Delta-9-THC                 | 0.291        | 2.91          |
| THCA                        | 24.87        | 248.69        |
| <b>Total Cannabinoids</b>   | <b>25.89</b> | <b>258.9</b>  |
| <b>Calculated Total THC</b> | <b>22.10</b> | <b>221.01</b> |
| <b>Calculated CBD Yield</b> | <b>0.04</b>  | <b>0.38</b>   |

Calculated Total THC = Delta-9-THC + 0.877 \* THCA  
Calculated Maximum CBD Yield = CBD + 0.877 \* CBDA

**Marin Analytics, LLC**  
250 Bel Marin Keys Blvd, Suite D4  
Novato, CA 94949

833-321-TEST / info@marinanalytics.com

**Mike Clemmons**  
Lab Manager

BioWellnessX

Sample 614-062223-052

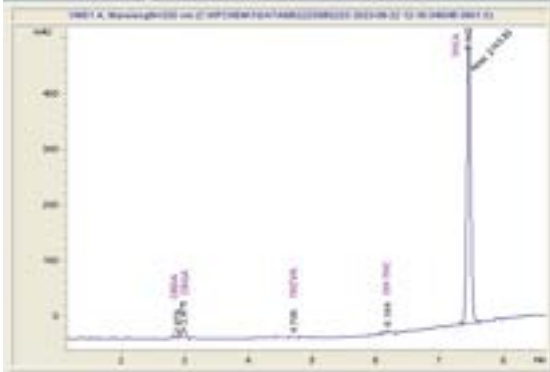
Apple Fritter THCA Hemp Flower

Sample Submitted: 06-22-2023; Report Date: 06-27-2023

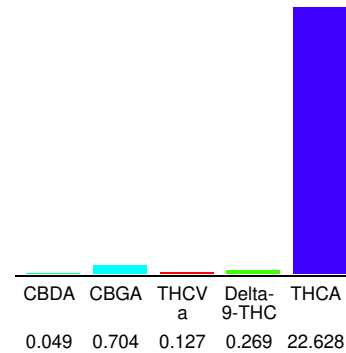
## Apple Fritter THCA Hemp Flower

Plant Material: Flower

### Chromatogram



### Cannabinoid Profile



### Cannabinoid Profile by HPLC

**0.27%**

Delta-9-THC

**0.00%**

CBD

**23.78%**

Total Cannabinoids

| Cannabinoid                 | % wt         | mg/g          |
|-----------------------------|--------------|---------------|
| CBDA                        | 0.049        | 0.49          |
| CBGA                        | 0.704        | 7.04          |
| THCVa                       | 0.127        | 1.27          |
| Delta-9-THC                 | 0.269        | 2.69          |
| THCA                        | 22.63        | 226.28        |
| <b>Total Cannabinoids</b>   | <b>23.78</b> | <b>237.8</b>  |
| <b>Calculated Total THC</b> | <b>20.11</b> | <b>201.14</b> |
| <b>Calculated CBD Yield</b> | <b>0.04</b>  | <b>0.43</b>   |

Calculated Total THC = Delta-9-THC + 0.877 \* THCA  
 Calculated Maximum CBD Yield = CBD + 0.877 \* CBDA

**Marin Analytics, LLC**

 250 Bel Marin Keys Blvd, Suite D4  
 Novato, CA 94949

833-321-TEST / info@marinanalytics.com


**Sara Biancalana**  
 Chief Scientist



BioWellnessX

Sample 467-031623-030

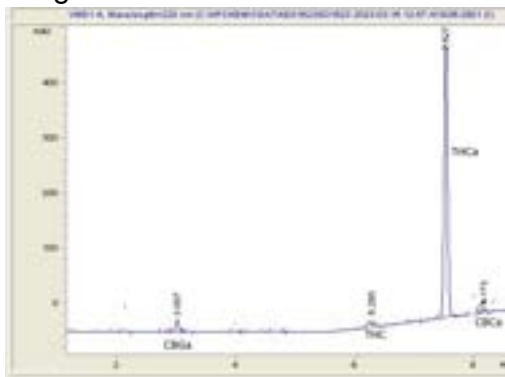
Berries & Cream THC-A Hemp

Sample Submitted: 03-16-2023; Report Date: 03-16-2023

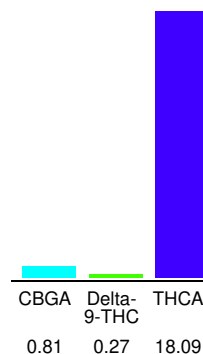
### Berries & Cream THC-A Hemp

Plant Material: Flower

#### Chromatogram



#### Cannabinoid Profile



#### Cannabinoid Profile by HPLC

**0.27%**  
Delta-9-THC

**0.00%**  
CBD

**19.17%**  
Total Cannabinoids

| Cannabinoid                 | % wt         | mg/g         |
|-----------------------------|--------------|--------------|
| CBGA                        | 0.81         | 8.1          |
| Delta-9-THC                 | 0.27         | 2.7          |
| THCA                        | 18.09        | 180.9        |
| <b>Total Cannabinoids</b>   | <b>19.17</b> | <b>191.7</b> |
| <b>Calculated CBD Yield</b> | <b>0.00</b>  | <b>0.00</b>  |

Calculated Maximum CBD Yield = CBD + 0.877 \* CBDA

**Marin Analytics, LLC**  
250 Bel Marin Keys Blvd, Suite D4  
Novato, CA 94949  
415-936-6477 / sarabiancalana1@gmail.com

*Sara Biancalana*  
**Sara Biancalana**  
Chief Scientist

This sample has been tested by Marin Analytics, LLC using valid testing methodologies and a quality system. Values reported relate only to the sample tested. Marin Analytics, LLC makes no claims as to the efficacy, safety or other risks associated with any detected or non-detected levels of any compounds reported herein. This Certificate shall not be reproduced except in full, without the written approval of Marin Analytics, LLC. Copyright 2022 Marin Analytics, LLC All Rights Reserved.

BiowellnessX, Inc.

Sample 619-110223-014

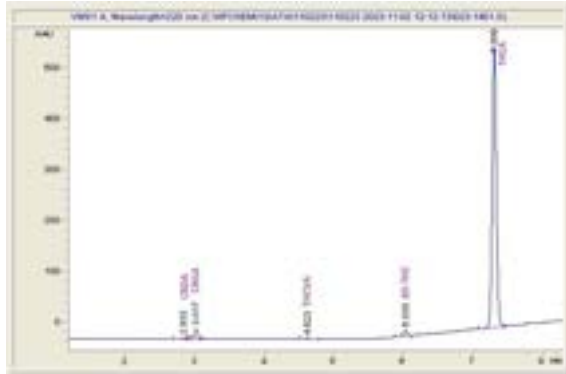
Gary Payton Hemp Flower

Sample Submitted: 11-02-2023; Report Date: 11-08-2023

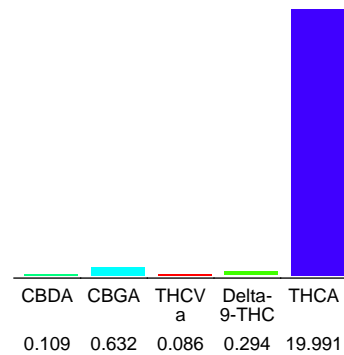
## Gary Payton Hemp Flower

Plant Material: Hemp Flower

### Chromatogram



### Cannabinoid Profile



### Cannabinoid Profile by HPLC

**0.29%**

Delta-9-THC

**0.00%**

CBD

**21.11%**

Total Cannabinoids

| Cannabinoid                 | % wt         | mg/g          |
|-----------------------------|--------------|---------------|
| CBDA                        | 0.109        | 1.09          |
| CBGA                        | 0.632        | 6.32          |
| THCVa                       | 0.086        | 0.86          |
| Delta-9-THC                 | 0.294        | 2.94          |
| THCA                        | 19.99        | 199.91        |
| <b>Total Cannabinoids</b>   | <b>21.11</b> | <b>211.1</b>  |
| <b>Calculated Total THC</b> | <b>17.83</b> | <b>178.26</b> |
| <b>Calculated CBD Yield</b> | <b>0.10</b>  | <b>0.96</b>   |

Calculated Total THC = Delta-9-THC + 0.877 \* THCA  
 Calculated Maximum CBD Yield = CBD + 0.877 \* CBDA

**Marin Analytics, LLC**

 250 Bel Marin Keys Blvd, Suite D4  
 Novato, CA 94949

833-321-TEST / info@marinanalytics.com


**Mike Clemmons**  
 Lab Manager

BiowellnessX, Inc.

Sample 619-112023-025

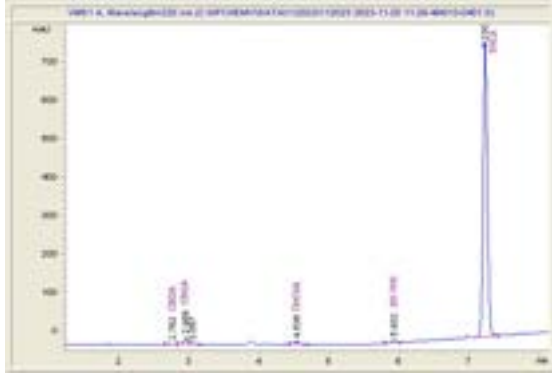
White Wedding (Hemp Flower)

Sample Submitted: 11-20-2023; Report Date: 11-28-2023

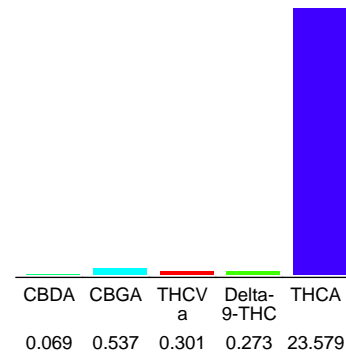
## White Wedding (Hemp Flower)

Plant Material: Hemp Flower

### Chromatogram



### Cannabinoid Profile



### Cannabinoid Profile by HPLC

**0.27%**

Delta-9-THC

**0.00%**

CBD

**24.76%**

Total Cannabinoids

| Cannabinoid                 | % wt         | mg/g          |
|-----------------------------|--------------|---------------|
| CBDA                        | 0.069        | 0.69          |
| CBGA                        | 0.537        | 5.37          |
| THCVa                       | 0.301        | 3.01          |
| Delta-9-THC                 | 0.273        | 2.73          |
| THCA                        | 23.58        | 235.79        |
| <b>Total Cannabinoids</b>   | <b>24.76</b> | <b>247.6</b>  |
| <b>Calculated Total THC</b> | <b>20.95</b> | <b>209.52</b> |
| <b>Calculated CBD Yield</b> | <b>0.06</b>  | <b>0.61</b>   |

Calculated Total THC = Delta-9-THC + 0.877 \* THCA

Calculated Maximum CBD Yield = CBD + 0.877 \* CBDA

**Marin Analytics, LLC**

250 Bel Marin Keys Blvd, Suite D4  
 Novato, CA 94949

833-321-TEST / info@marinanalytics.com

**Mike Clemmons**  
 Lab Manager



BioWellnessX Inc

Sample 614-062223-049

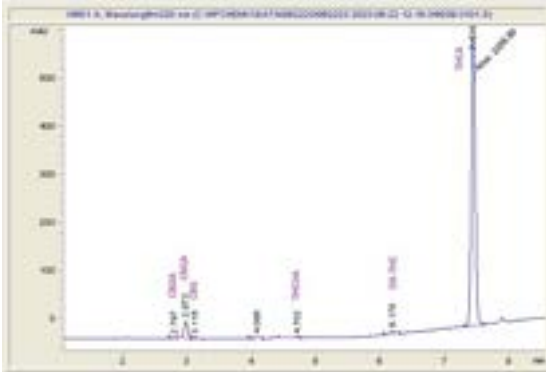
Yoda OG THC-A Hemp Flower

Sample Submitted: 06-22-2023; Report Date: 06-27-2023

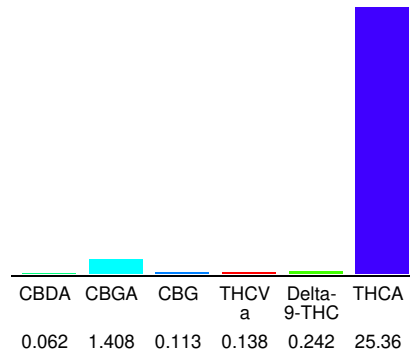
## Yoda OG THC-A Hemp Flower

Plant Material: Flower

### Chromatogram



### Cannabinoid Profile



### Cannabinoid Profile by HPLC

**0.24%**

Delta-9-THC

**0.00%**

CBD

**27.32%**

Total Cannabinoids

| Cannabinoid                 | % wt         | mg/g          |
|-----------------------------|--------------|---------------|
| CBDA                        | 0.062        | 0.62          |
| CBGA                        | 1.408        | 14.08         |
| CBG                         | 0.113        | 1.13          |
| THCVa                       | 0.138        | 1.38          |
| Delta-9-THC                 | 0.242        | 2.42          |
| THCA                        | 25.36        | 253.6         |
| <b>Total Cannabinoids</b>   | <b>27.32</b> | <b>273.2</b>  |
| <b>Calculated Total THC</b> | <b>22.48</b> | <b>224.83</b> |
| <b>Calculated CBD Yield</b> | <b>0.05</b>  | <b>0.54</b>   |

Calculated Total THC = Delta-9-THC + 0.877 \* THCA

Calculated Maximum CBD Yield = CBD + 0.877 \* CBDA

**Marin Analytics, LLC**

 250 Bel Marin Keys Blvd, Suite D4  
 Novato, CA 94949

833-321-TEST / info@marinanalytics.com


**Sara Biancalana**  
 Chief Scientist